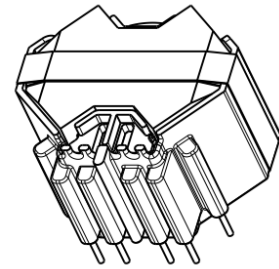


# Switching Transformer (Original Bobbin)



PIN TYPE WT series

## TYPE : WT10H20RM



### ■ 製品説明 Product Description

Downsized and Vertical types

Creepage Distance

Primary - Secondary : 15mm

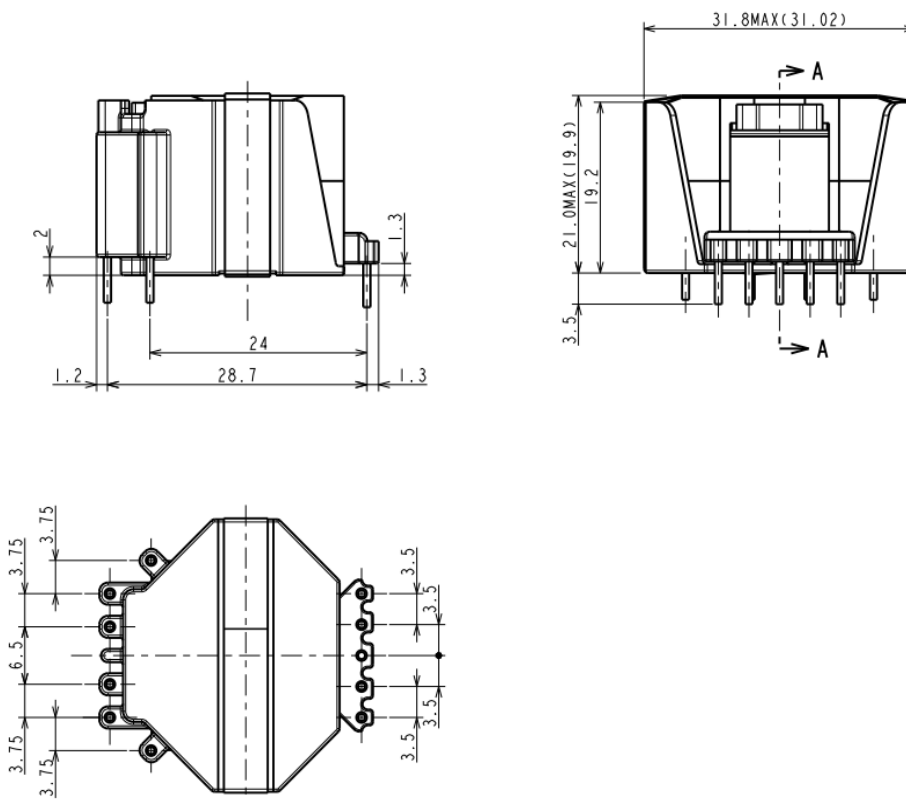
High output per unit volume by adopting RM core

(Contrast with E core)

### ■ Application & Production

Telecommunications equipment, Industrial equipment

### ■ Dimensions (unit : mm)



### ■ Applicable core

6H20RM10G (JSF) , PC40RM10Z-12 (TDK) , etc

1. Specifications are subject to change for improvement without notice.
2. Please request us detailed specification.